

# Team Switzerland – Merchandise

## FCI World Championship + CSS World Winner Event - Lure Coursing 2023

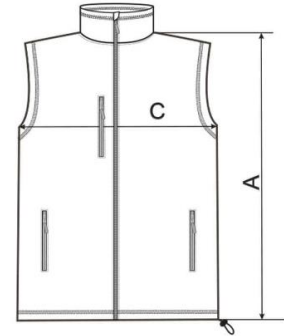
### Fleece Weste Unisex CHF 55.00



#### SIZE SPECIFICATION [cm]

| size | XS | S  | M  | L  | XL | 2XL | 3XL |
|------|----|----|----|----|----|-----|-----|
| A    | 63 | 65 | 67 | 69 | 71 | 73  | 74  |
| C    | 44 | 48 | 52 | 56 | 60 | 65  | 71  |

All size specifications listed are in cm. Accepted tolerance of up to ± 5%.



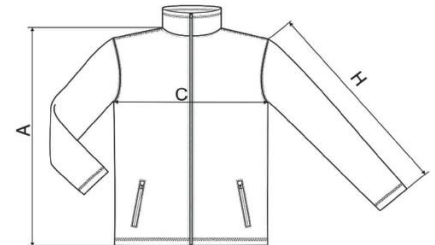
### Fleece Jacke Herren CHF 65.00



#### SIZE SPECIFICATION [cm]

| size | S  | M  | L  | XL | 2XL | 3XL  |
|------|----|----|----|----|-----|------|
| A    | 69 | 71 | 73 | 75 | 77  | 79   |
| C    | 50 | 54 | 58 | 62 | 66  | 72   |
| H    | 66 | 67 | 68 | 69 | 70  | 71,5 |

All size specifications listed are in cm. Accepted tolerance of up to ± 5%.



### Fleece Jacke Damen CHF 65.00



#### SIZE SPECIFICATION [cm]

| size | XS | S  | M  | L  | XL | 2XL |
|------|----|----|----|----|----|-----|
| A    | 61 | 63 | 65 | 67 | 69 | 71  |
| C    | 42 | 46 | 50 | 54 | 58 | 64  |
| H    | 62 | 63 | 64 | 65 | 66 | 67  |

All size specifications listed are in cm. Accepted tolerance of up to ± 5%.



**T-Shirt Herren CHF 30.00**



| Größen | XS    | S     | M     | L     | XL    | XXL   | 3XL   | 4XL*  |
|--------|-------|-------|-------|-------|-------|-------|-------|-------|
| A/B    | 68/45 | 70/48 | 72/51 | 74/54 | 76/57 | 78/60 | 80/63 | 82/66 |

**T-Shirt Damen CHF 30.00**



| Größen | S     | M     | L     | XL    | XXL   | 3XL*  |
|--------|-------|-------|-------|-------|-------|-------|
| A/B    | 61/41 | 63/44 | 65/47 | 67/50 | 69/53 | 71/56 |

**Softshell Jacke Herren (weiss oder grau) CHF 70.00**



Measures in CMS

| SIZE   | XS  | S   | M   | L   | XL  | 2XL | 3XL | 4XL | 5XL | TOL |
|--|-----|-----|-----|-----|-----|-----|-----|-----|-----|-----|
| TO FIT APPROX. CHEST                                   | 35" | 38" | 41" | 44" | 46" | 48" | 50" | 52" | 55" | +/- |
| A 1/2 CHEST AT UNDERARM - LAY GARMENT FLAT             | 50  | 54  | 57  | 61  | 64  | 66  | 69  | 71  | 75  | 1   |
| B BACK LENGTH  | 68  | 70  | 72  | 74  | 76  | 78  | 79  | 80  | 81  | 1   |
| C SHOULDER / SLEEVE LENGTH (TAKEN FROM SIDE NECK SEAM) | 77  | 79  | 81  | 83  | 85  | 87  | 89  | 90  | 91  | 1   |



**Softshell Jacke Damen (weiss oder grau) CHF 70.00**



Measures in CMS

| SIZE   | XS | S  | M  | L  | XL | 2XL | TOL |
|--|----|----|----|----|----|-----|-----|
| TO FIT APPROX. CHEST                                   | 8  | 10 | 12 | 14 | 16 | 18  | +/- |
| A 1/2 CHEST AT UNDERARM - LAY GARMENT FLAT             | 47 | 50 | 52 | 55 | 57 | 59  | 1   |
| B BACK LENGTH  | 63 | 64 | 65 | 66 | 67 | 68  | 1   |
| C SHOULDER / SLEEVE LENGTH (TAKEN FROM SIDE NECK SEAM) | 69 | 71 | 73 | 75 | 77 | 79  | 1   |

**Baseball Cap CHF 20.00**  
Einheitsgrösse, verstellbar, grau



**Aufkleber (weiss oder schwarz, 23 x 10 cm) CHF 5.00**



---

**Bestellschluss: 4. Mai 2023**

Bestellungen bitte via E-Mail, FB Messenger oder WhatsApp an:

**Gone With The Hound – Irmina Serafin**  
[design@irminaserafin.com](mailto:design@irminaserafin.com)  
**+41 79 280 58 18**

**Vorauszahlung via TWINT oder Banküberweisung.**

